

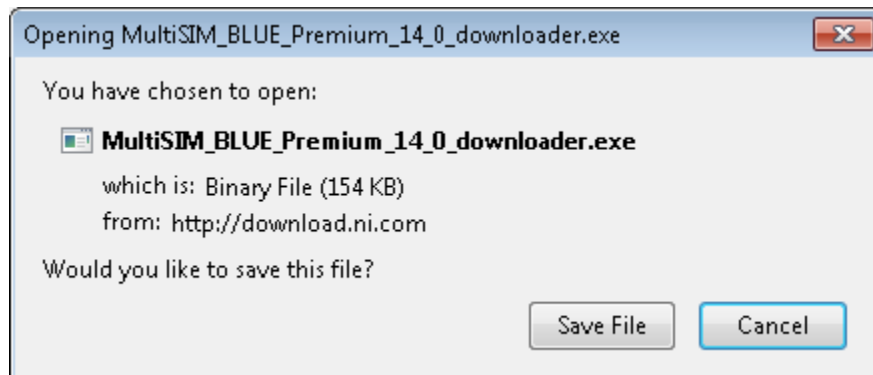
Download, Install and Activate Multisim Blue Premium

Overview

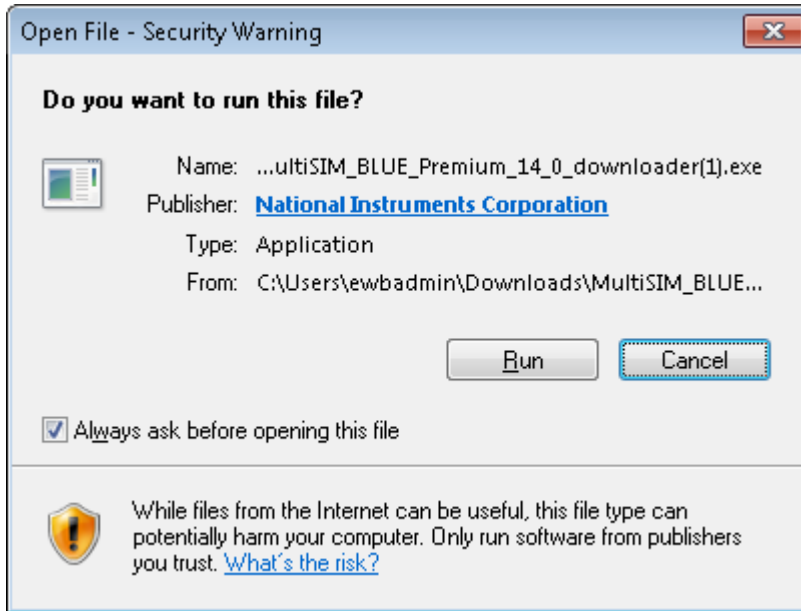
This tutorial shows how to download and install Multisim Blue Premium and the steps to activate it. A clean computer were used to create this tutorial, your computer may have other applications that will cause the steps to be different.

Download Installer

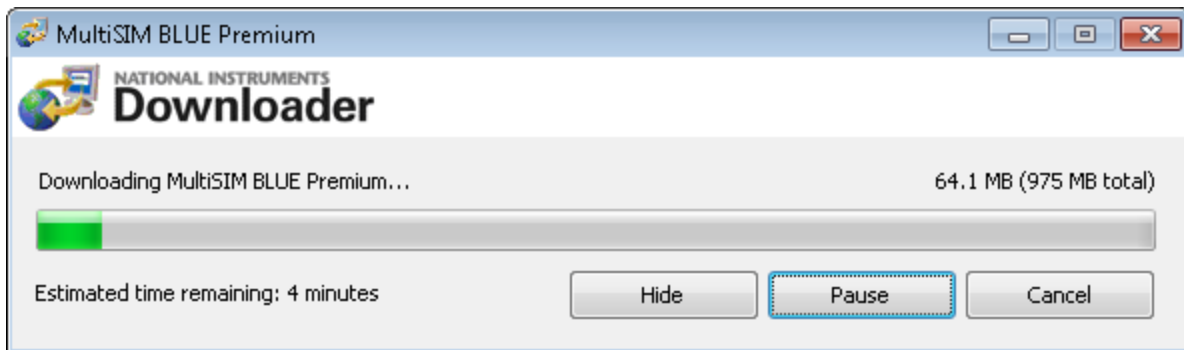
1. Locate the **Multisim Blue Premium** installer from Mouser website.
2. Save the **Multisim_Blue_Premium_downloader.exe** utility to your computer.



3. Locate the **MultiSIM_BLUE_Premium_14_0_downloader.exe**. Most internet browser will save the file to: **C:\Users\your login\Downloads**. If you cannot locate the file, check your internet browser settings.
4. Click the **Run** button run the downloader.

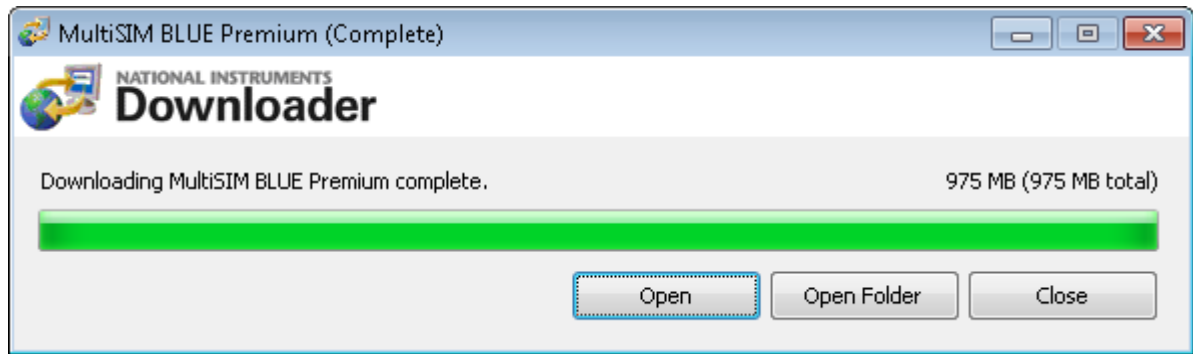


5. Wait for the MultiSIM Blue Premium downloader to complete.

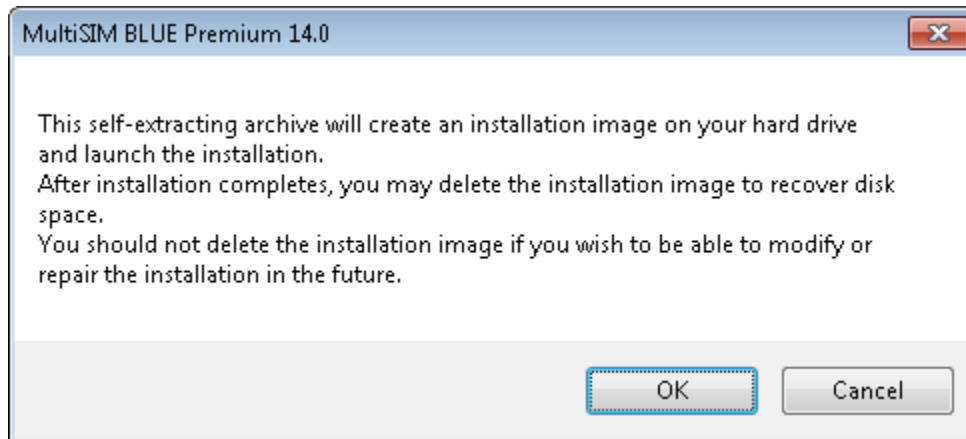


6. Click the **Open** button once the downloader is finished.

Note: If you have Winzip, WinRar or anything other file extract tool, you may not see this dialog box. You can use those applications to extract the self-extracting zip file you just downloaded. You can proceed to step 8.



7. Click the **OK** button.



8. Click the **Install MultiSIM Blue Premium 14.0** to begin the installation.



M MultiSIM PREMIUM™ BLUE

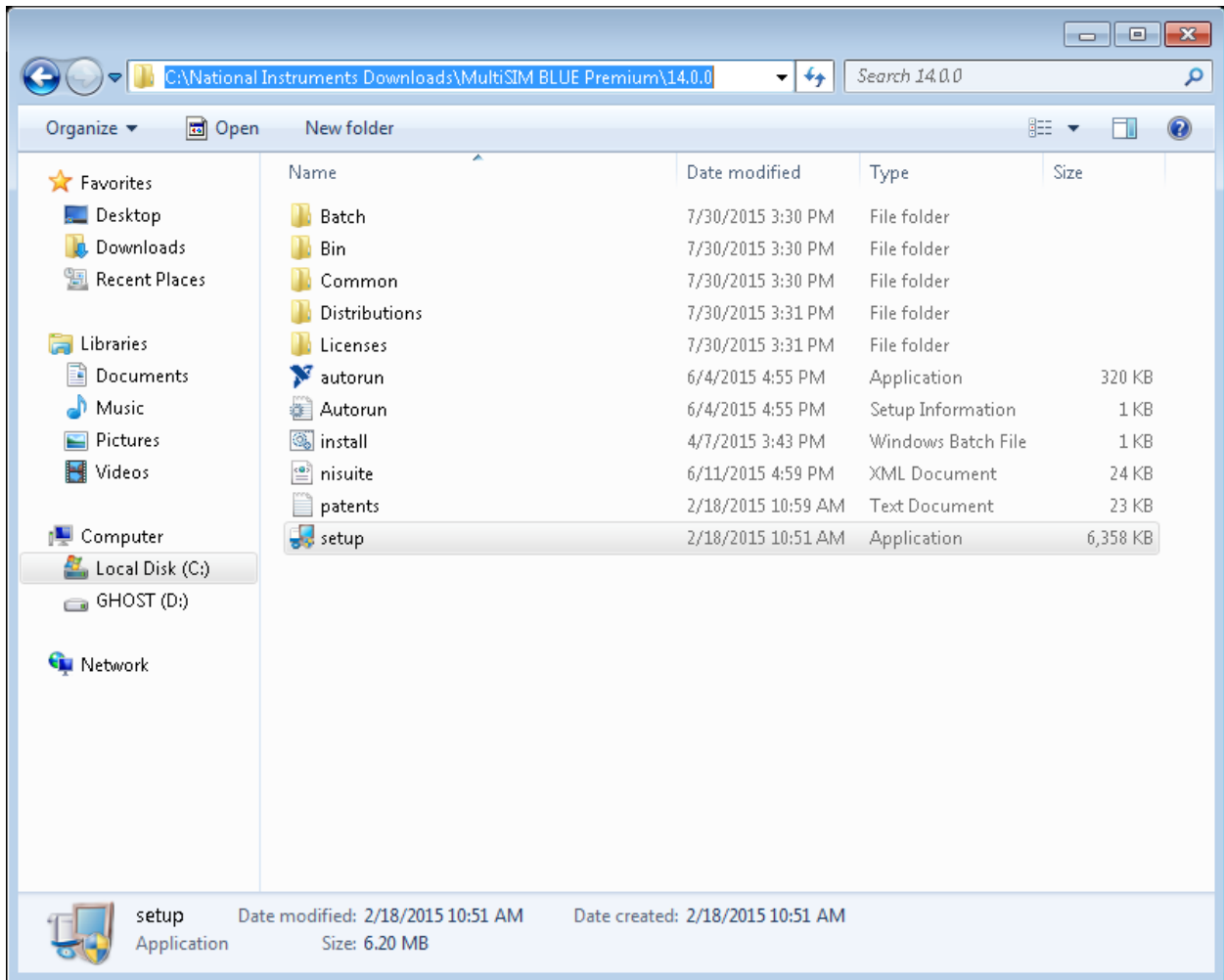
Mouser Professional Edition, Powered by National Instruments

- **Install MultiSIM BLUE Premium 14.0**
- Explore the Media
- Exit

© 2007–2015 National Instruments. All rights reserved. All product and company names listed are trademarks or trade names of their respective companies.



Note: If you are using other file extracting tool, you can manually launch the installer by clicking on the **setup.exe**, located in the folder you extracted.



9. Follow the installation wizard, use the default setup by clicking on the **Next** button.

- If you have a serial number, you can enter it during the installation wizard. You can also leave the serial number textbox empty and enter it later during the activation step.
- If you do not have a previous Multisim version installed, you will have to reboot the computer.

MultiSIM BLUE Premium

User Information
Enter the following information.

Full Name:

Organization:

Install NI Circuit Design Suite 14.0 using the following serial number:

Serial Number:

Leave the Serial Number field blank to use the product in evaluation mode.

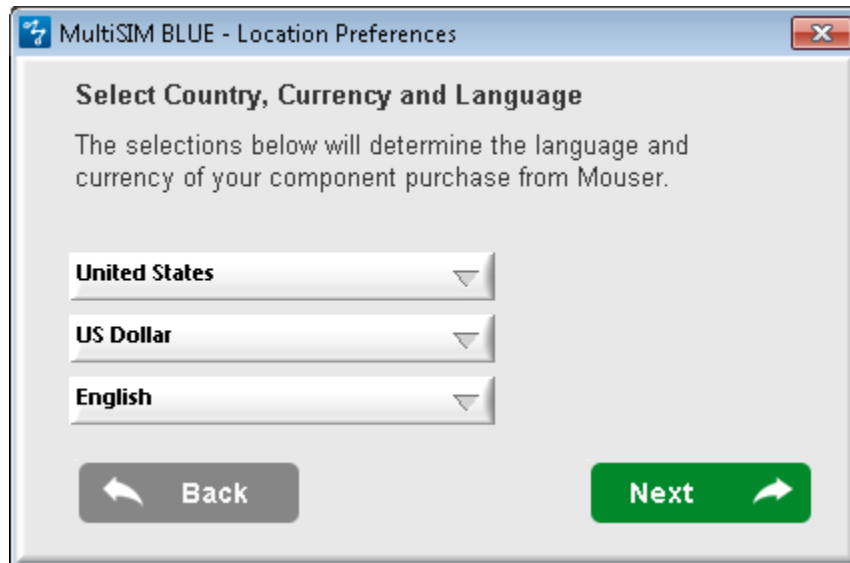
<< Back Next >> Cancel

Multisim Blue Premium Launcher

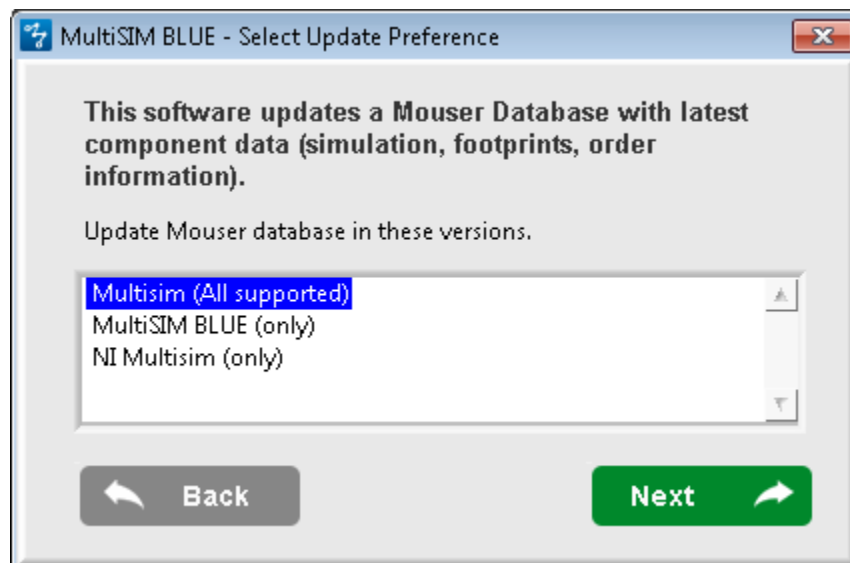
1. Once your computer have rebooted, click the **MultiSIM BLUE Launcher** icon on your desktop.



2. Go through the initial setup and provide your required information.
 - Enter you country, currency and language preferences.
 - Click **Next**.

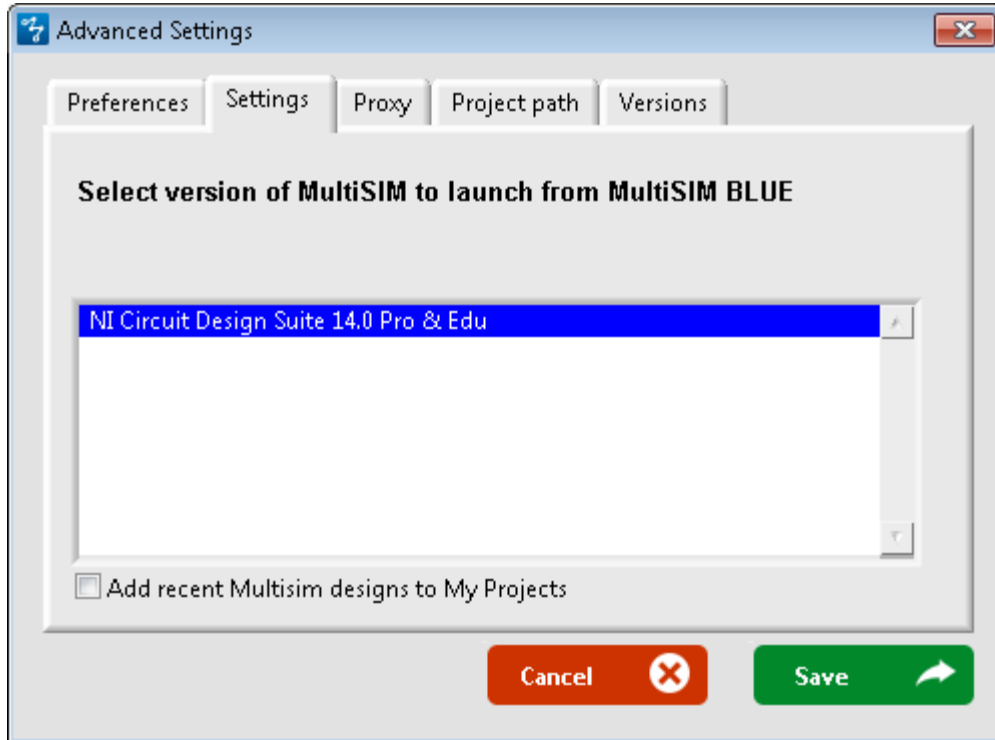


3. Set the database update preferences.
 - In the **Select Update Preference** keep the default **Multisim (All Supported)** option to ensure both Multisim Blue and Multisim have the latest database updates.
 - Click **Next**.



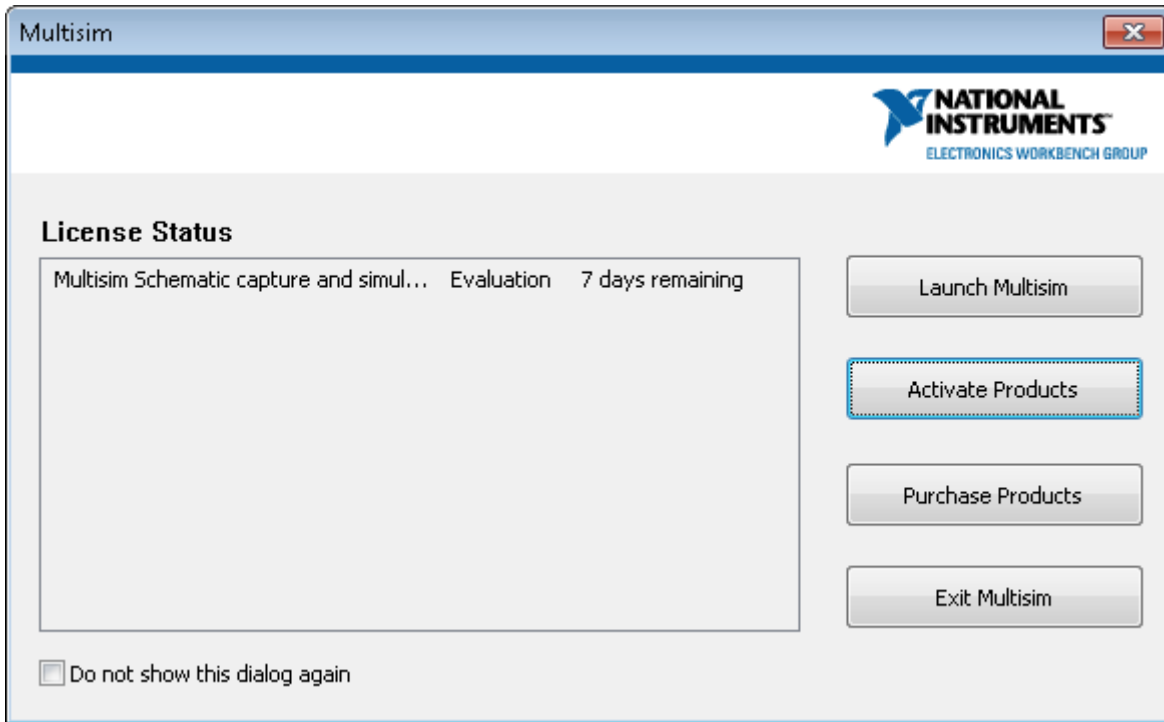
4. Review the **Term and Conditions**.
 - After reviewing the terms and condition agreements check the **Accept** box.
 - Click **Next**.
5. Select which Multisim version to launch.

- Select **File»Settings»Settings**. Other Mouser and Multisim 14 versions will be listed in this window, select the version you want to launch by default.
- Click the **Save** button.



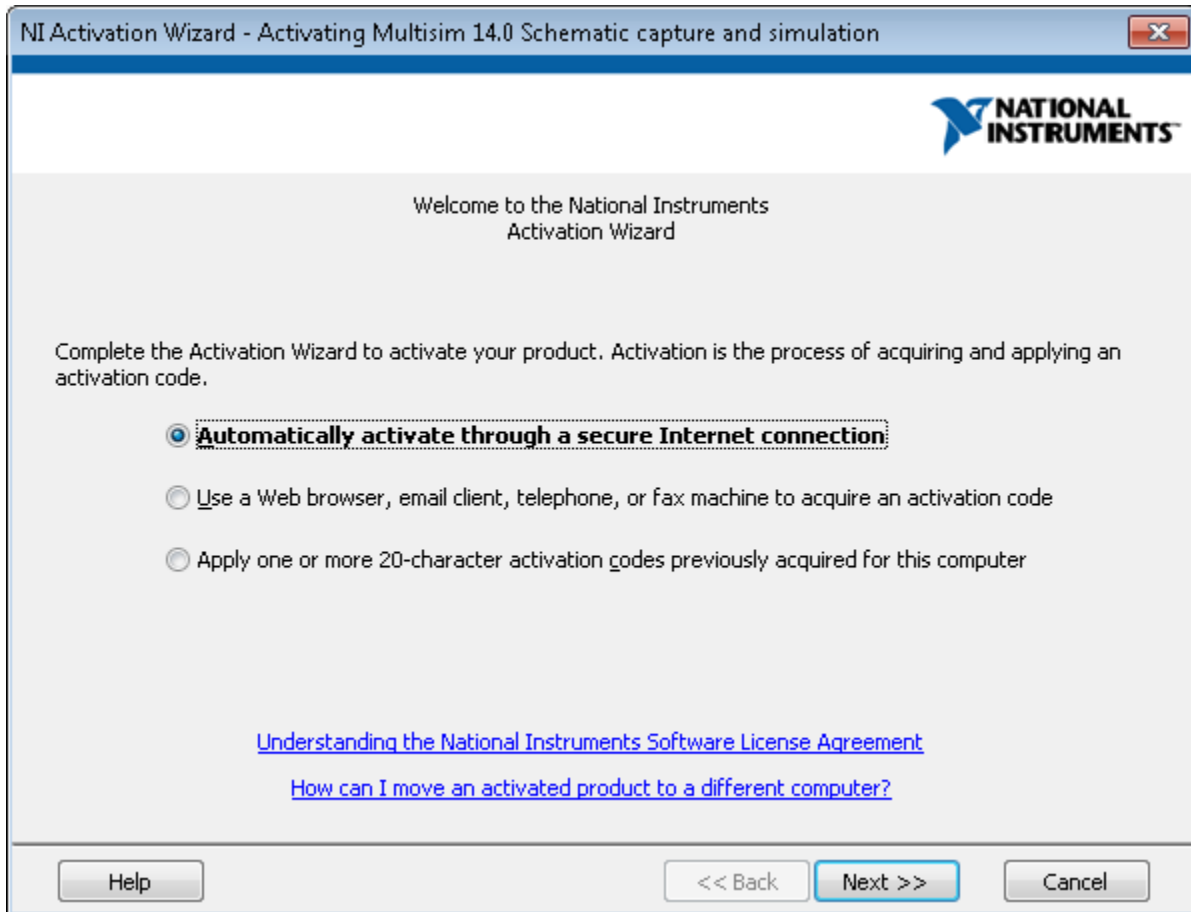
6. Launch Multisim.

- Click the **Launch Multisim** button to launch Multisim. Step 5 determines which Multisim version will start if you have more than one version installed.
- In the **Multisim** window there are several options:
 - **Launch Multisim:** This option launches Multisim in evaluation mode, you have full access to all the Multisim features. However, after the trial period expired Multisim will not start. The trial period is initially set to 7 days and you have the option to extend it to 45 days total.
 - **Activate Products:** If you have a Multisim serial number, select this option to activate the Multisim. If you do not want to activate Multisim at the moment, select the **Launch Multisim** option, you can activate at a later time.
 - **Purchase Multisim:** This option will take you to the Multisim web page.
 - **Exit Multisim:** This will end the launch.

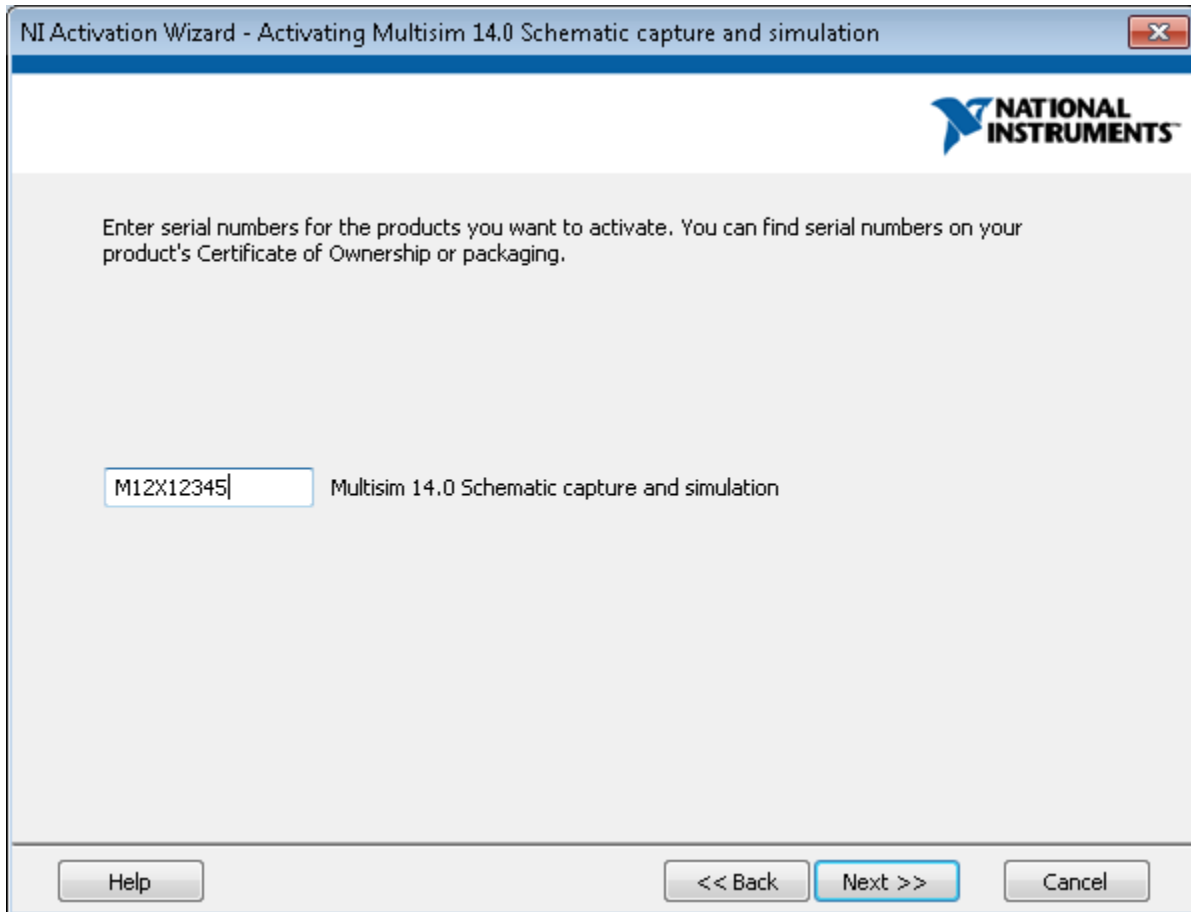


7. Activate Multisim.

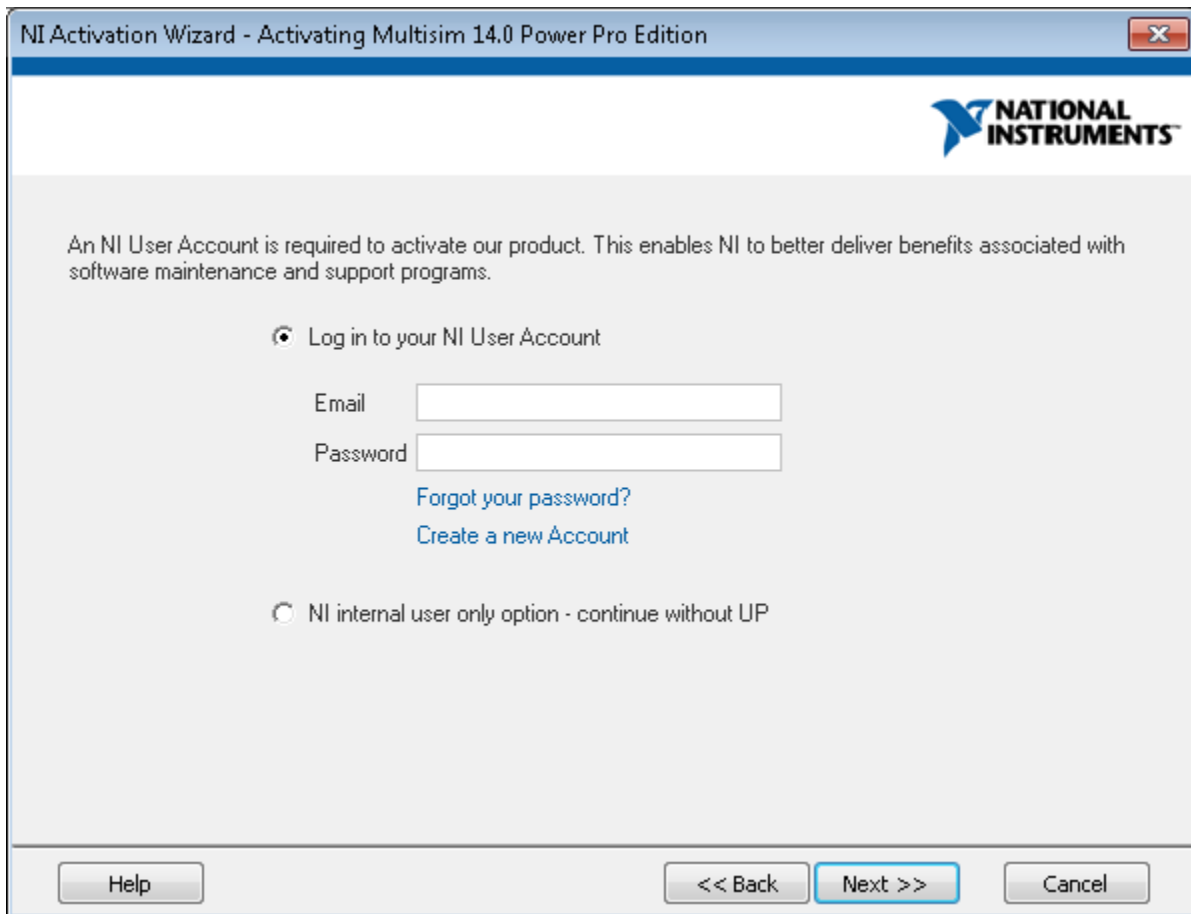
- There are many ways to activate NI Software, the following steps show the two most common methods.



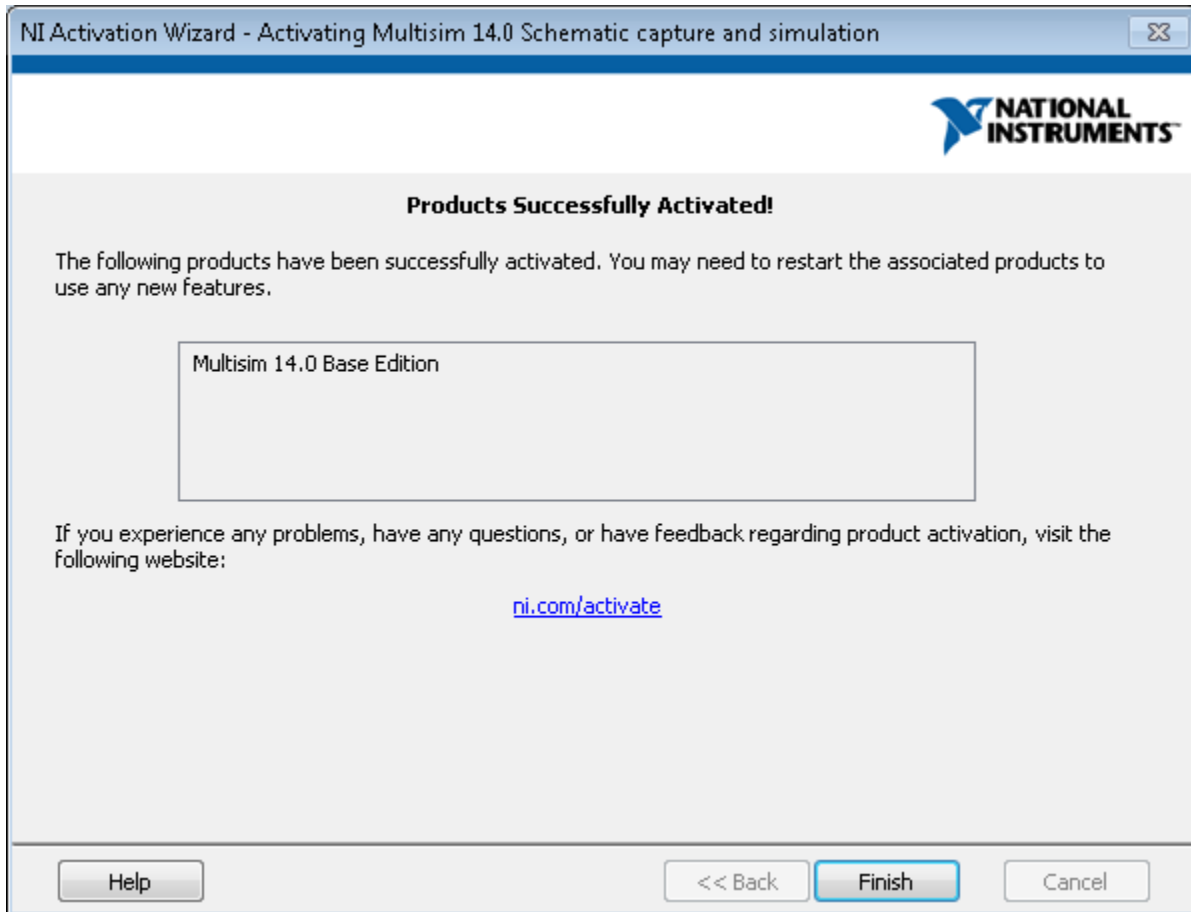
- **Automatically Activate through a secure Internet connection** is easiest way to activate NI software and is the default.
 - Click the **Next** button.
 - Enter your serial in the **Multisim 14.0 Schematic Capture and simulation** textbox. This number should have been provided to you when you purchased Multisim. The serial format is similar what is shown below.



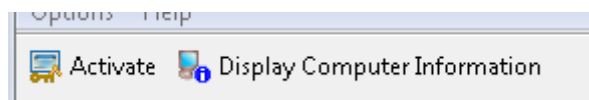
- o Enter your email and NI password. Click the **Create a New Account** if you have not created a NI account.



- You will see a message **Product Successfully Activated** message if Multisim was activated.



- Click the **Finish** button to launch Multisim.
- **Apply one or more 20-character activation codes previously acquired for this computer** select this method if you computer is not connected to the internet. There are several methods to obtain an activate code, this tutorial shows how to the code on ni.com.
 - Click Start»**All Programs**»**National Instruments**»**NI License Manager**.
 - Click the **Display Computer Information** button.



- Copy the unique 20-character **computer ID**.

Computer Information

Computer Name:	<input type="text" value="TPHAE6420"/>
Computer ID:	<input type="text" value="6MZC-FWDX-3ZZ8-PSMJ"/>

- Go to ni.com/activate
- Click the **Product** down-arrow and **Multisim Base Edition**.
- Click the **Product Version** down-arrow and select **14.0**.
- Enter the computer ID you copied from the NI License manger in the previous step. Note the computer ID is a unique number that is based on your computer hardware, you cannot use the ID from one computer to obtain an activation code for a different computer.
- Enter your information for the remaining fields.

NI Product Activation

Thank you for contacting National Instruments to activate your product. Use this page to activate your 24 hours a day, 7 days a week. The form below is one of several methods you can use to activate you help activating your product, visit the [Product Activation](#) page. For additional information on the NI license the usage policies, visit the [Licensing Options](#) page.

[Privacy Policy](#)

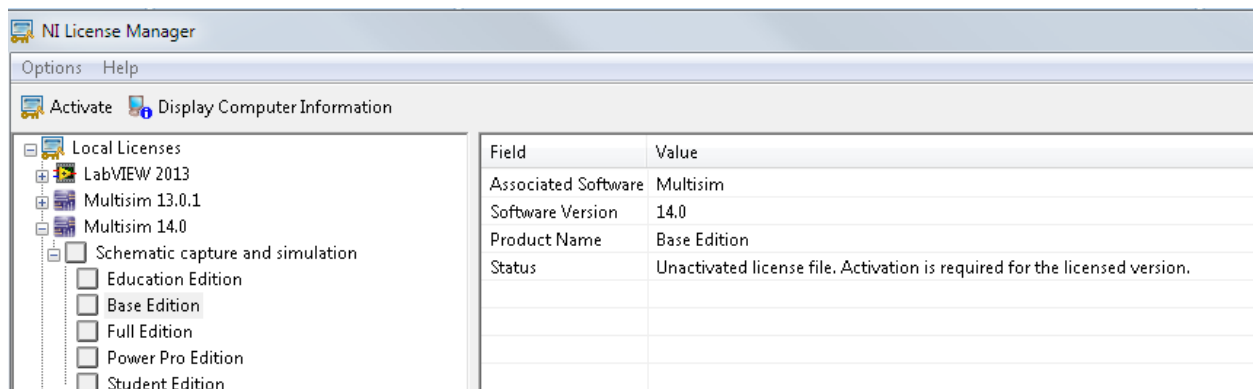
Product	
<input type="text" value="Multisim Base Edition"/>	
Operating System	Product Version ⁱ
Windows	<input type="text" value="14.0"/>
Serial Number ⁱ	Computer ID ⁱ
<input type="text" value="M12X12345"/>	<input type="text" value="6MZC-FWDX-3ZZ8-PSMJ"/>
First Name	Organization
<input type="text" value="Your Name"/>	<input type="text" value="Your Organization"/>
Last Name	Email Address ⁱ
<input type="text" value="Your Name"/>	<input type="text" value="your.email@address.com"/>

- Click the **Submit** button.
- The next step will provide you with the activate code. You will also receive an email with the code.
- Copy the activation code.

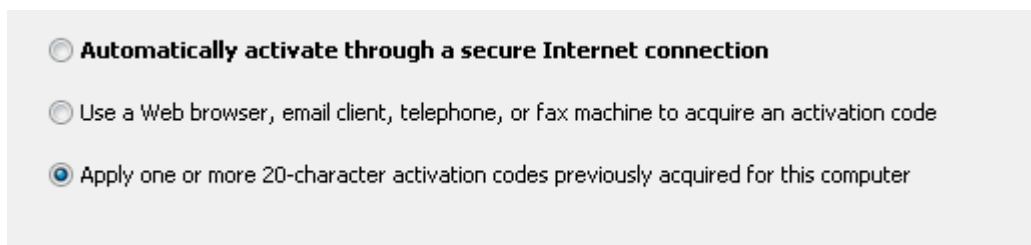
Activation Information

Product:: Multisim
Version:: 14.0
Activation Code:: BG95-KRF7-66Q9-FY4F-CK9M

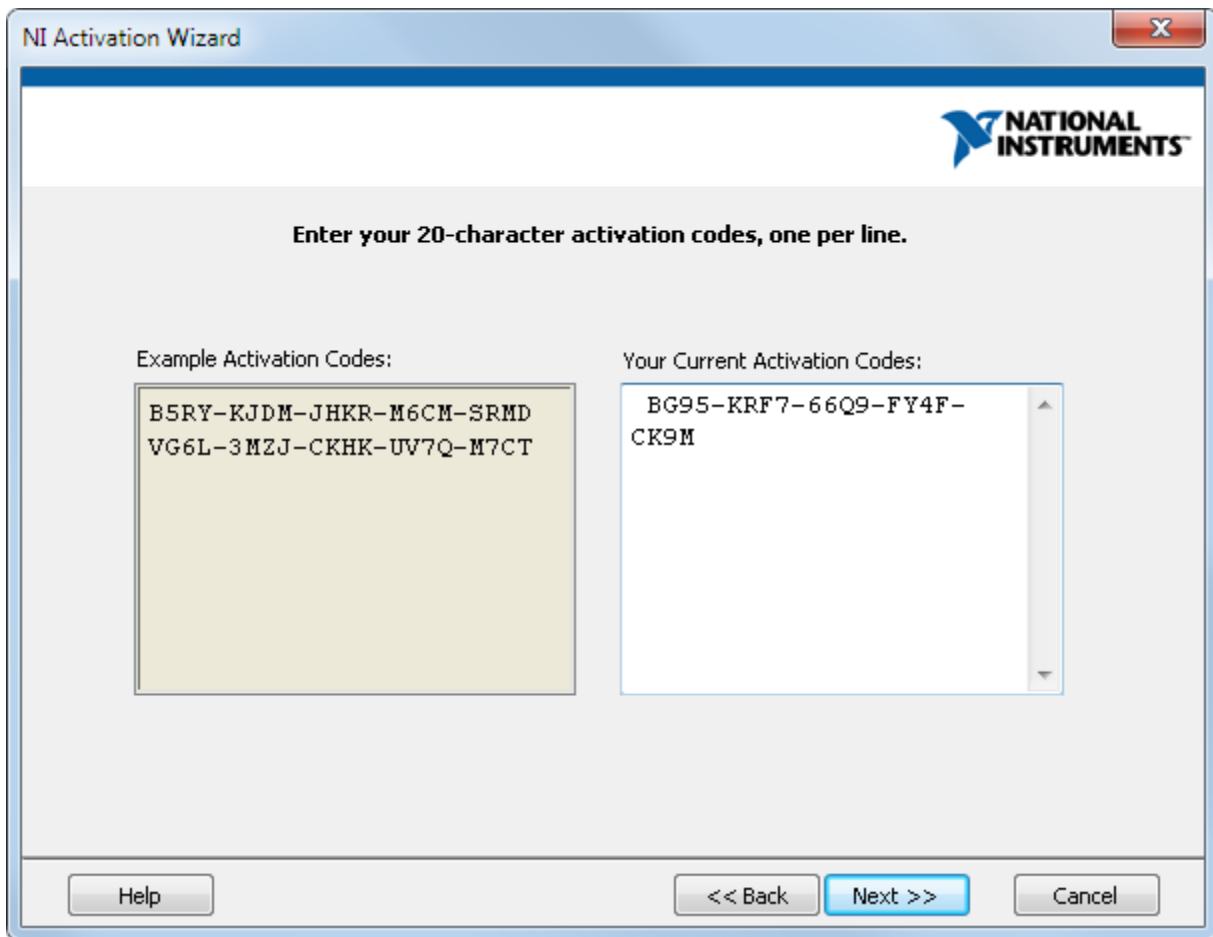
- In the NI License Manager select the **Multisim Base** then click the **Activate** button.



- In the **NI Activation Wizard** click the **Apply one or more 20-character activation codes previously acquired for this computer** radio button.



- Click **Next**.
- Enter your activate code in the **Your current Activation Code** window.



- Click **Next**.
 - Click the **Finish**.
8. Place a component from the **Mouser Database**.
- In Multisim select **Place»Component**.
 - Click **Database** drop-down arrow and select the **Mouser Database**.
 - Select any component from the **Component** window.
 - Click **OK**.